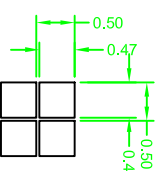
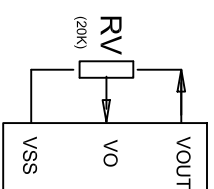
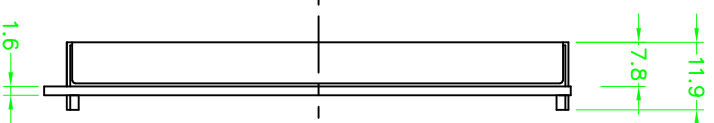
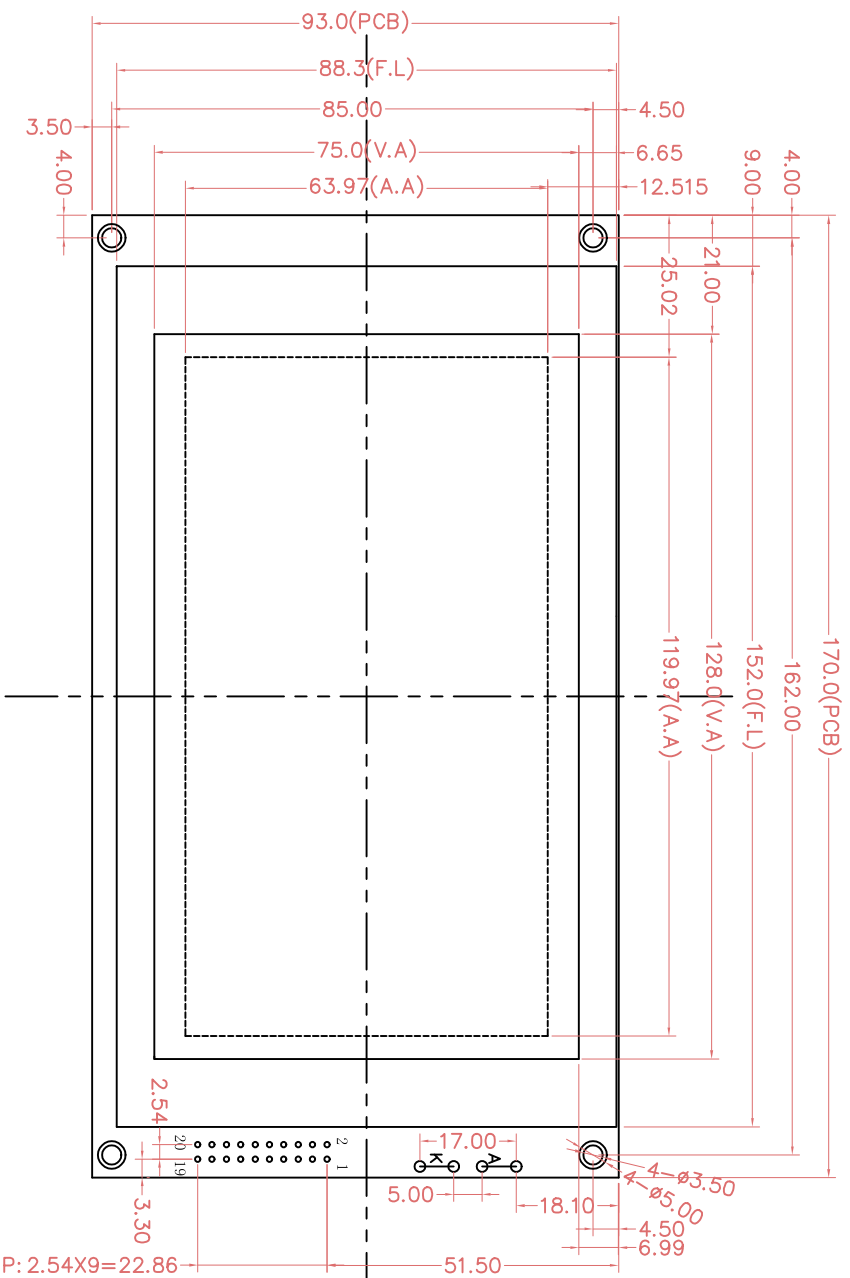


Customer approval :



A: Anode of LED Backlight, 5.0V
 K: Cathode of LED Backlight, 0V

PIN	1	2	3	4	5	6	7	8	9	10
CONNECTION	FGND	VSS	VDD	VO	/WR	/RD	/CE	C/D	VOUT	/RST
PIN	11	12	13	14	15	16	17	18	19	20
CONNECTION	DB0	DB1	DB2	DB3	DB4	DB5	DB6	DB7	FS	RV

- Specification:
- 1). Driving: Duty: 1/128, Bias: 1/12, Vout: -14.5V, VO: -12.5V, VDD: 5.0V.
 - 2). Viewing direction: 6 o'clock
 - 3). Display mode: STN/Negative/Transmissive
 - 4). Operating temp: -20°C ~ +70°C
 - 5). Storage temp: -30°C ~ +80°C
 - 6). Control IC: T6963C (Or Compatible)
 - 7). Backlight: White array LED: 5.0V
 - 8). dimensions with mark "" are important with mark "(" are referenced
 - 9). All the raw materials are RoHS compliant

REV	REVISION RECORD	DATE	TCCLCD		DRAWING BY		GENERAL TOL:
A	FIRST ISSUE	2015/11/03	MODEL NO. SYB240128F3V10-05C5KLN7-B5W1		CHECKED BY 检查		未注公差 ±0.3
B			APPROVED BY 审核		DRAWING BY 绘图		
C			Liu		Francis		
D			2015/11/03		Luoxian		三角法



深圳市三元晶科技有限公司
 Shenzhen TCCLCD Hi-Tech Co., Ltd.

